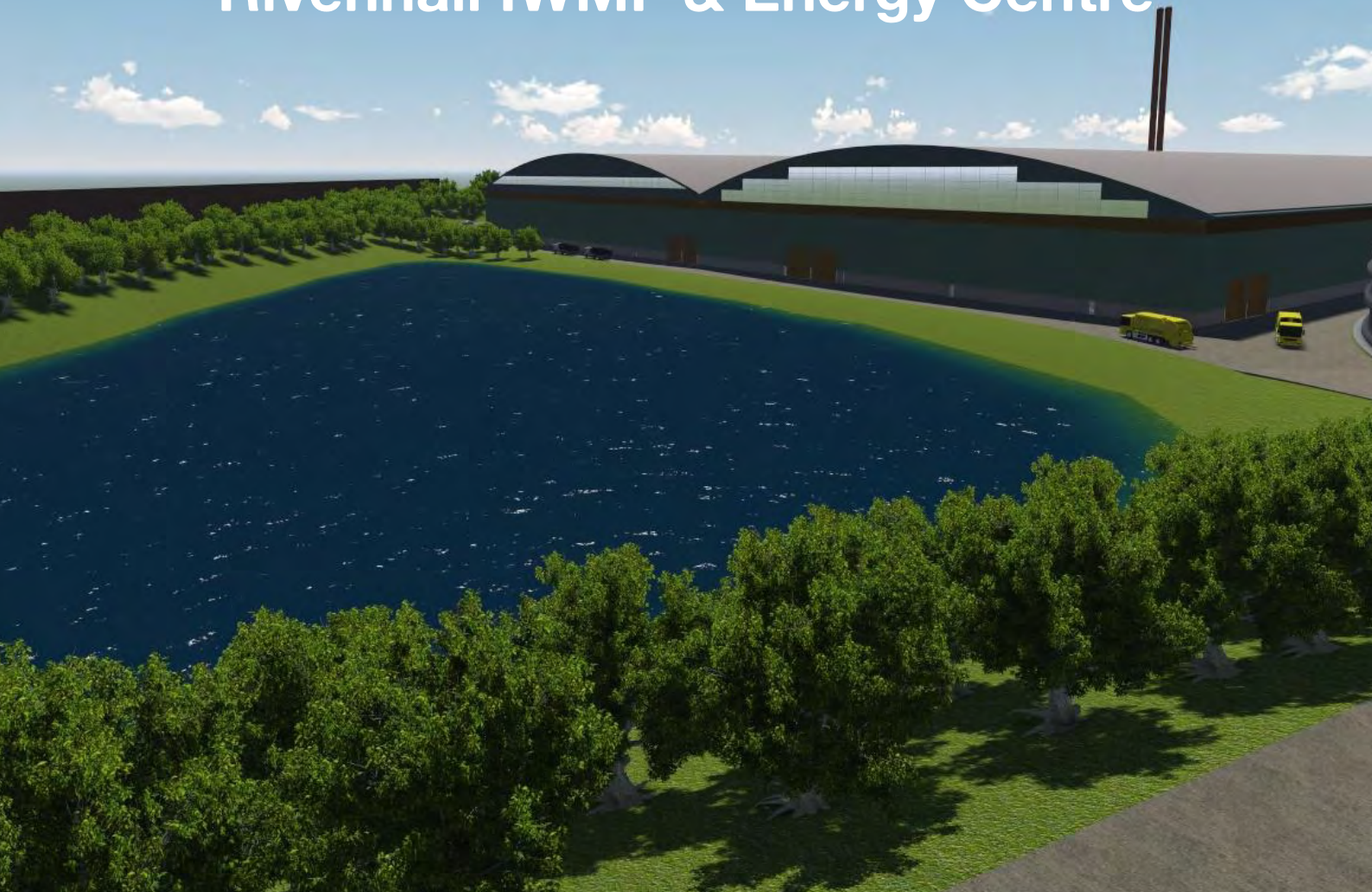




Rivenhall IWMF & Energy Centre



www.indaver.com

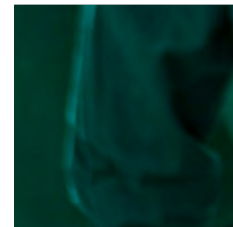
Our Company

Indaver is an established European waste management company, with a proven track record in integrated waste management.

Our trademark is delivering high-quality and cost-efficient waste management services to large scale industry, public authorities and waste management companies. Operating since 1985, our experience, together with a wide range of treatment facilities and processing capabilities allows us to offer tailored sustainable solutions for a wide range of household, commercial and industrial waste.

Through improved recycling and maximum recovery of sustainable energy and high quality waste materials, Indaver plays a key role in the circular economy and contributes to a more sustainable world.

Indaver currently has facilities and operations in Belgium, the Netherlands, Germany, UK, Ireland, Portugal and Italy and is continuing to expand its European portfolio of waste treatment infrastructure.





To achieve prosperity and wellbeing for all in society the UN has set seventeen Sustainable Development Goals for the period 2015 to 2030. The waste sector has a vital role to play in making these ambitious goals a reality. Indaver has chosen nine of these goals to guide our contribution to a more sustainable world through our key role in the circular economy.

Your Sustainable Partner in the Circular Economy

Indaver aims to play a key role in the circular economy, where waste becomes a sustainable raw material and material loops are closed. By recovering sustainable energy and high quality materials from the waste we treat, we are creating added value for our customers and for society.

At Indaver we are consistently monitoring and continuously improving our activities to maintain balance and sustainability.

We maintain sustainable business practices internally and seek out suppliers who offer a similar level of corporate social responsibility.

We aim to provide sustainable waste management solutions which will:

- Recover maximum value from waste
- Recover renewable energy and raw materials from waste
- Help close material loops where possible
- Have minimal impact on both people and the environment
- Limit our ecological and carbon footprint by treating waste locally

Indaver can be your sustainable waste management partner and assist you in meeting your circular economy and UN Sustainable Development Goals.



Our Development Locations in the UK & Ireland

Indaver is currently expanding its European portfolio of waste treatment infrastructure. We are developing Energy from Waste facilities in the UK and Ireland which will allow an expansion of our services in the coming years.



Rivenhall IWMF & Energy Centre

Rivenhall, Essex

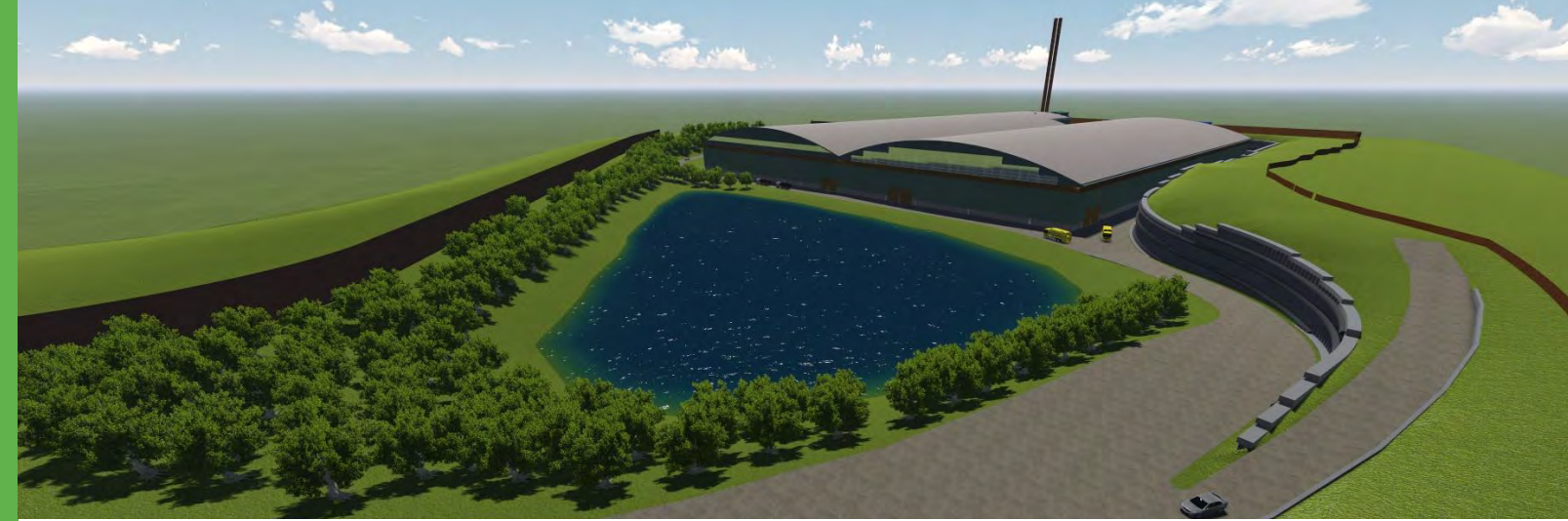
Facility location

2025

Proposed opening date

595,000

Tonnes of annual capacity



The Rivenhall Integrated Waste Management Facility (IWMF) & Energy Centre is expected to begin commissioning in early 2025 and be fully operational by the end of the year.

The facility will treat residual waste from local authorities as well as commercial and industrial residual waste from the private waste sector.

The project will contribute to the following policy targets:

Renewable energy and net-zero carbon targets: the facility will export electricity from an indigenous fuel source, enough to power over 60,000 homes annually and over 50% of which is renewable.

Circular economy targets: the facility will divert biodegradable waste from landfill and from export abroad, reducing harmful greenhouse gas emissions and recovering metals and ash.

Customer Benefits

The Rivenhall IWMF & Energy Centre will provide a streamlined user experience for all. Offering a safe, efficient and flexible solution to the waste collection industry, Indaver will continue to lead the field in sustainable waste management.



Acceptance of waste

Household, commercial and industrial waste accepted



Flexible delivery times

Facility opening hours:
07:00 to 18:30 Mon– Fri
07:00 to 13:00 Sat



Good road network

Good road network means facility can service a wide catchment area



Delivery flexibility

Weekly delivery schedules for additional flexibility



Turnaround times

Efficient turnaround times for waste deliveries



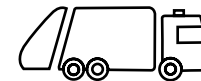
Driver Health & Safety

Safety bars at bunker entrance to ensure safe unloading



Delivery Alert System

To notify drivers of any changes to their delivery slot



Range of vehicles

Range of waste delivery vehicles accepted



Bunker capacity

Sufficient bunker capacity for deliveries during shutdowns



Driver welfare facilities

Driver coffee dock and WC facilities



Tracking and reporting

Efficient tracking, reporting and invoicing system



Online Booking System

Online customer management platform available

Location of the Rivenhall IWMF & Energy Centre



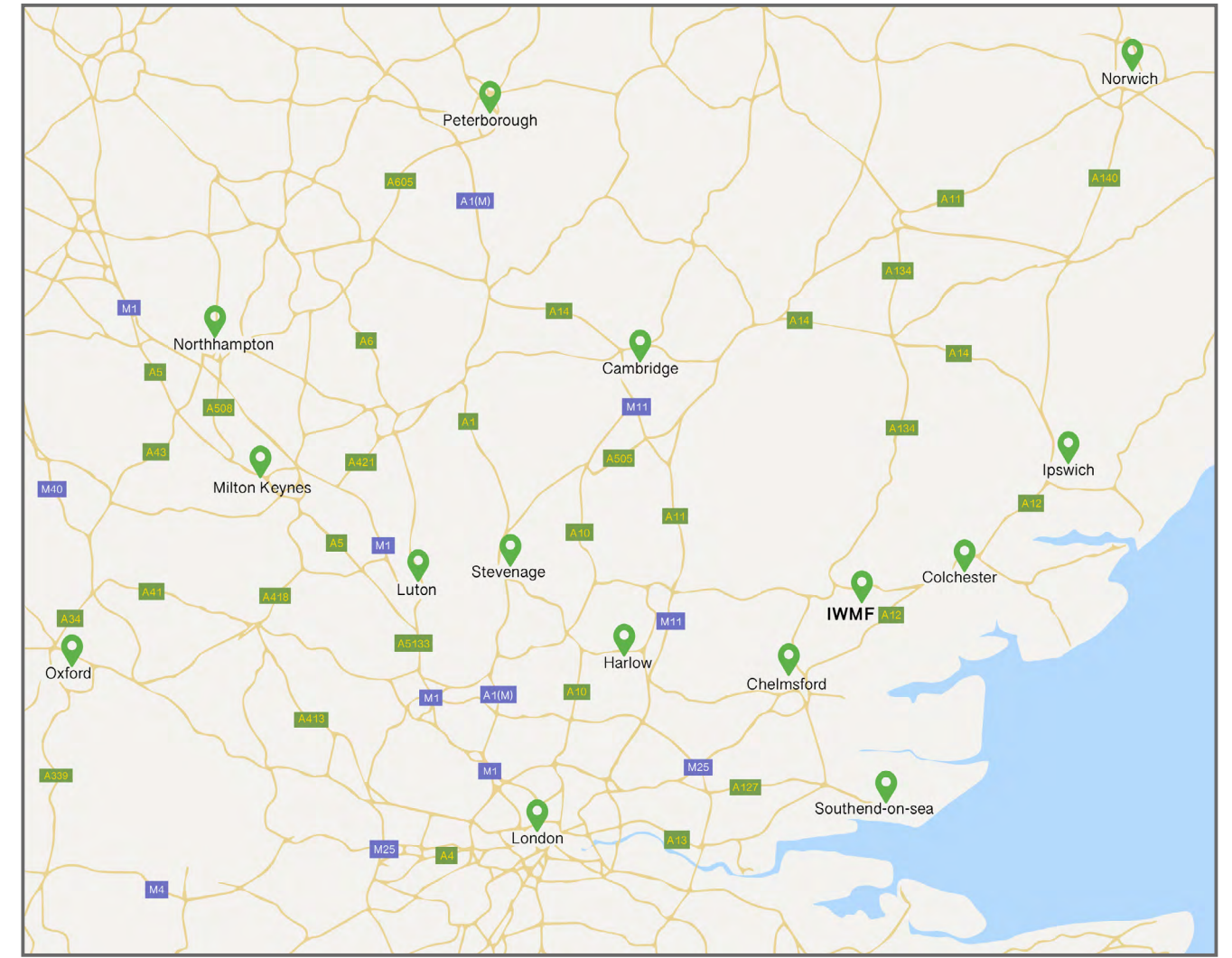
The entrance for waste deliveries to the Rivenhall IWMF & Energy Centre is off the A120, between the villages of Bradwell and Coggeshall.

The entrance for reception, the visitor centre and museum is via Woodhouse Lane, between the villages of Silver End and Kelvedon.





Surrounding Towns and Cities





Indaver Rivenhall Limited

T +44 1279 311440

E info@rivenhall-iwmf.co.uk

W www.indaver.com / www.rivenhall-iwmf.co.uk

Registered office

Kao Hockham Building
Edinburgh Way
Harlow
Essex
CM20 2NQ

Waste deliveries

Coggeshall Road
Bradwell
Essex
CO6 1NZ

Information Hub

Woodhouse Farm
Woodhouse Lane
Kelvedon
Essex
CO5 9DF